

Customer: _____


Agent: _____

SPECIFICATION of Fresnel Lens

MODEL NO. : NCL-9(10)

 **NIPPON CERAMIC CO., LTD.**

176-17 Hirooka, Tottori-shi, 689-1193 JAPAN
TEL : +81-857-53-4666 FAX : +81-857-53-3532

APPROVED BY		CHECKED BY		DRAWN BY	
MODEL NO. : NCL-9(10)	DRAWING NO. : 1504091A	REV : A	PAGE 1 / 4	April, 15, 2009	
PART NO. :				 NIPPON CERAMIC CO., LTD.	

1. Scope

This specification describes a Fresnel lens which is used for passive infrared detector.

2. Type of Unit

2.1. Type Name: Spherical shape Fresnel lens

2.2. Model No.: NCL-9(10)

3. Dimensions

See Figure 1.

4. Material

High Density Polyethylene (HDPE)

5. Optical Characteristics
5.1. Number of Zones

10 zones

5.2. Detection Area

See Figure 2.


6. Environmental Characteristics
6.1. Operating Temperature

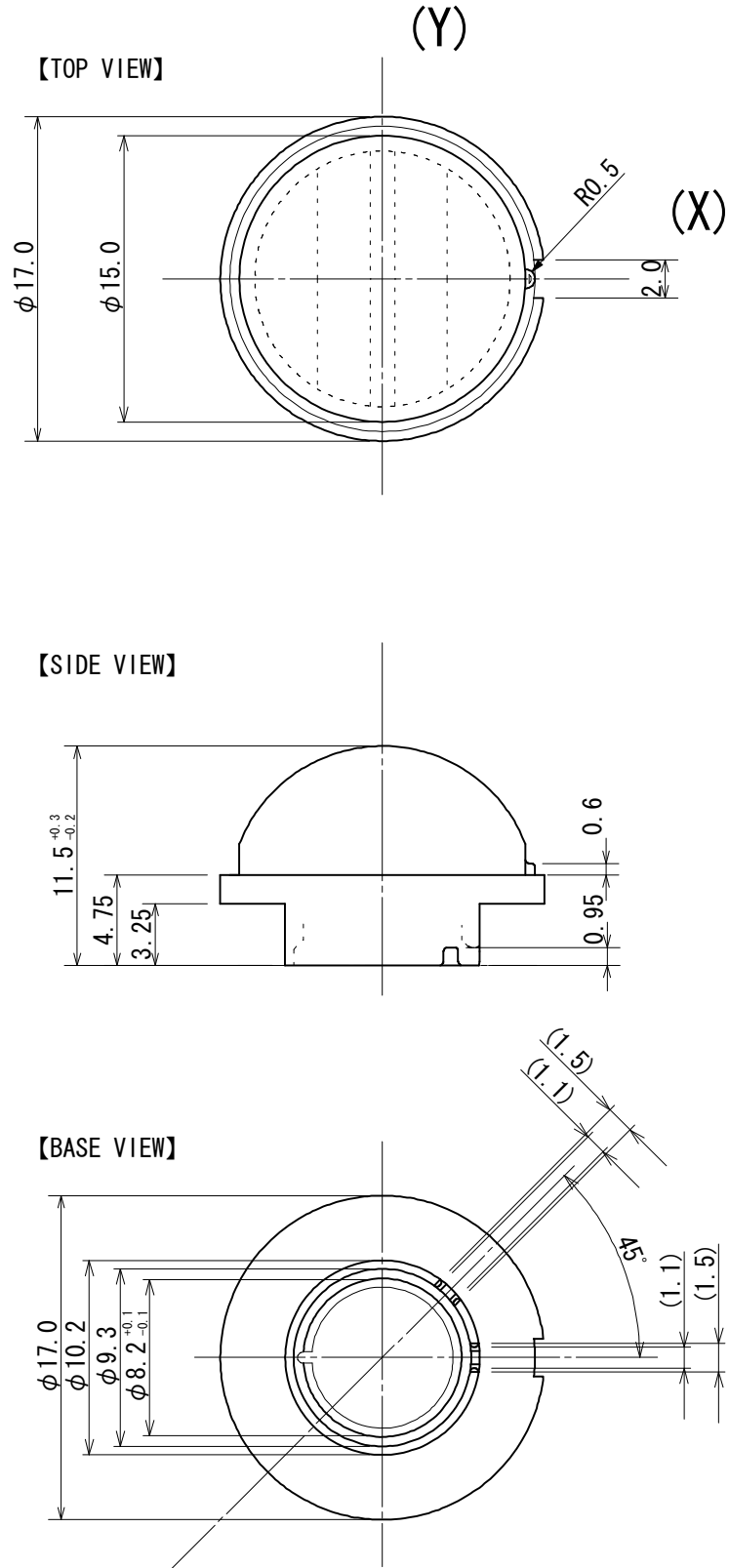
-20 °C ~ +70 °C

6.2. Storage Temperature

-25 °C ~ +75 °C

* Please avoid using the lens in direct sunshine conditions because it may cause degradation of the transmittivity.

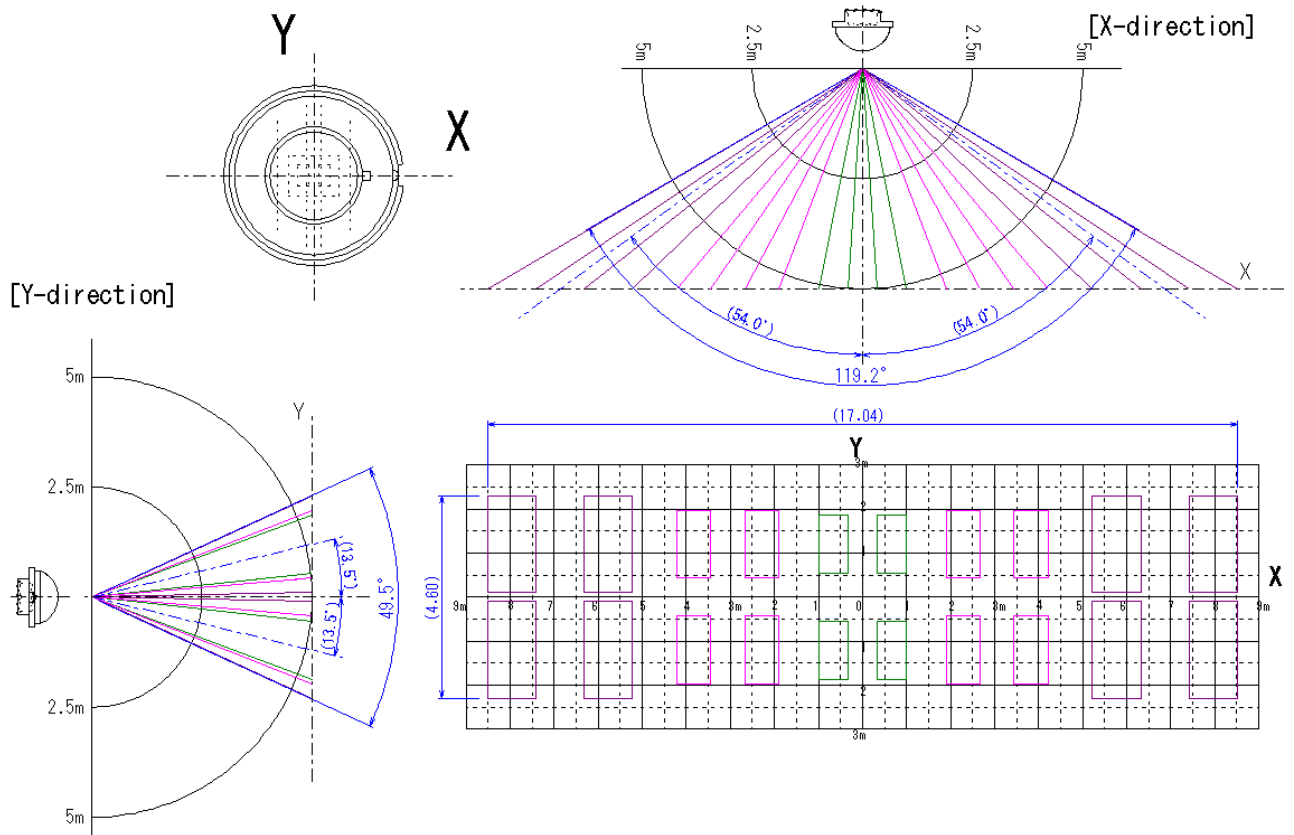
MODEL NO. : NCL-9(10)	DRAWING NO. : 1504091A	REV : A	PAGE 2 / 4	April, 15, 2009
PART NO. :				 NIPON CERAMIC CO., LTD.



Unit [mm]

Figure 1: Dimensions

MODEL NO. : NCL-9(10)	DRAWING NO. : 1504091A	REV : A	PAGE 3 / 4	April, 15, 2009
PART NO. :				NIPPON CERAMIC CO., LTD.



- Sensor: Pyro-electric Infrared Sensor, Dual Element Type
- Element Size: 1.0mm (X) x 2.0mm (Y) x Gap1.0mm

Unit [m]

Figure 2: Detection Area

MODEL NO. : NCL-9(10)	DRAWING NO. :	REV :	PAGE	April, 15, 2009
PART NO. :	1504091A	A	4 / 4	NIPPON CERAMIC CO., LTD.