


Customer: _____

Agent: _____

SPECIFICATION of Convex Lens

MODEL NO. : NCL-9(26) **NIPPON CERAMIC CO., LTD.**176-17 Hirooka, Tottori-shi, 689-1193 JAPAN
TEL : +81-857-53-4666 FAX : +81-857-53-3532

APPROVED BY		CHECKED BY		DRAWN BY	
MODEL NO. : NCL-9(26)	DRAWING NO. : 1504091B	REV : A	PAGE 1 / 4	April, 15, 2009	
PART NO. :				 NIPPON CERAMIC CO., LTD.	

1. Scope

This specification describes a multifaceted convex lens which is used for passive infrared detector.

2. Type of Unit

2.1. Type Name: Spherical shape convex lens

2.2. Model No.: NCL-9(26)

3. Dimensions

See Figure 1.

4. Material

High Density Polyethylene (HDPE)

5. Optical Characteristics**5.1. Number of Zones**

26 zones

5.2. Detection Area

See Figure 2.


6. Environmental Characteristics**6.1. Operating Temperature**

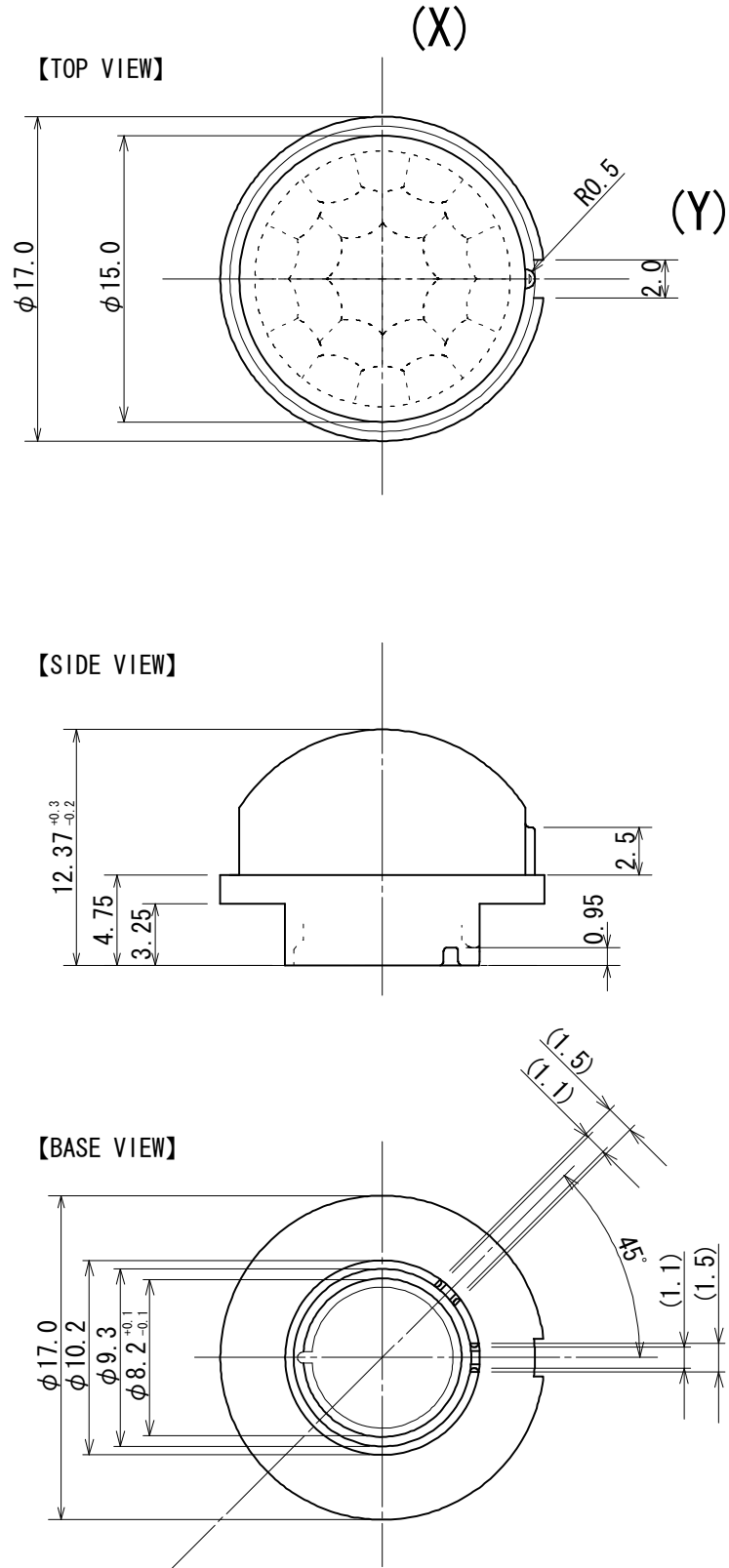
-20 °C ~ +70 °C

6.2. Storage Temperature

-25 °C ~ +75 °C

* Please avoid using the lens in direct sunshine conditions because it may cause degradation of the transmittivity.

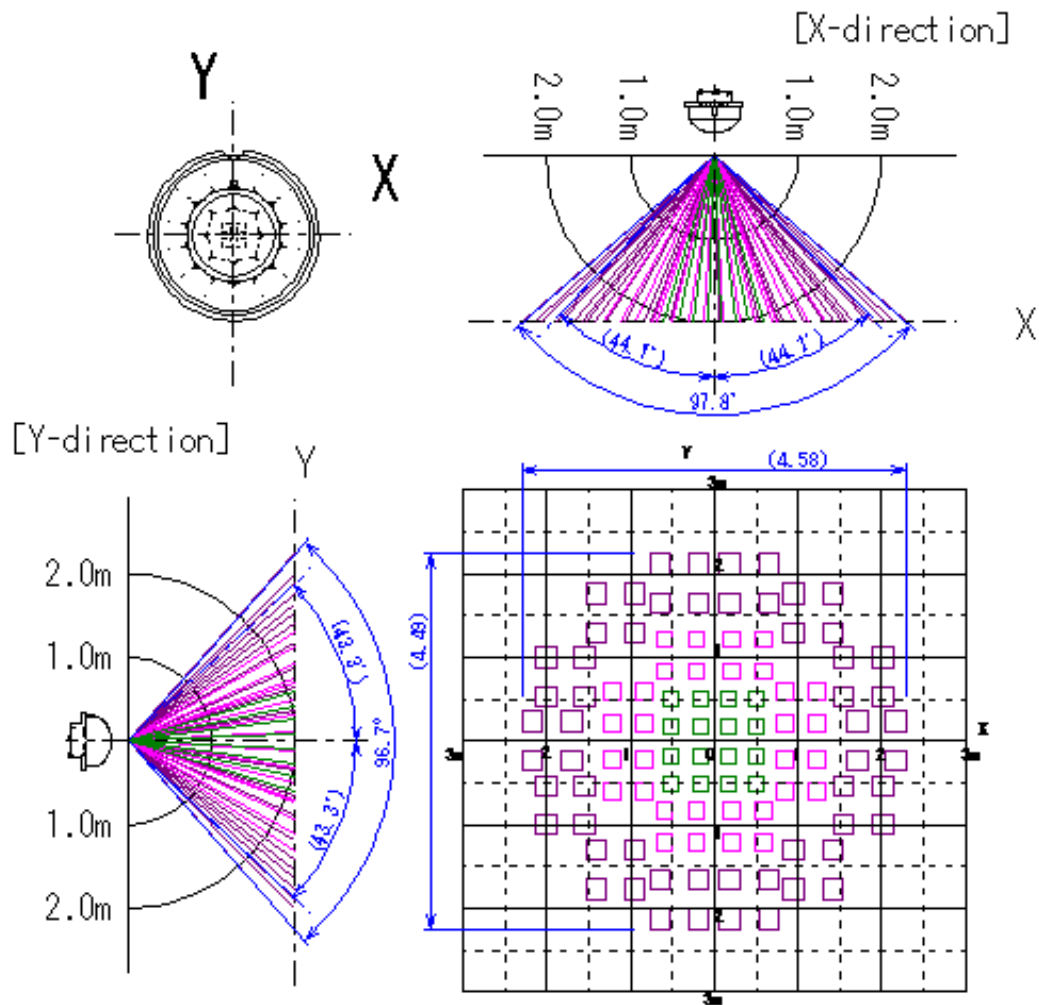
MODEL NO. : NCL-9(26)	DRAWING NO. : 1504091B	REV : A	PAGE 2 / 4	April, 15, 2009
PART NO. :				 NIPON CERAMIC CO., LTD.



Unit [mm]

Figure 1: Dimensions


MODEL NO. : NCL-9(26)	DRAWING NO. : 1504091B	REV : A	PAGE 3 / 4	April, 15, 2009
PART NO. :				NIPPON CERAMIC CO., LTD.

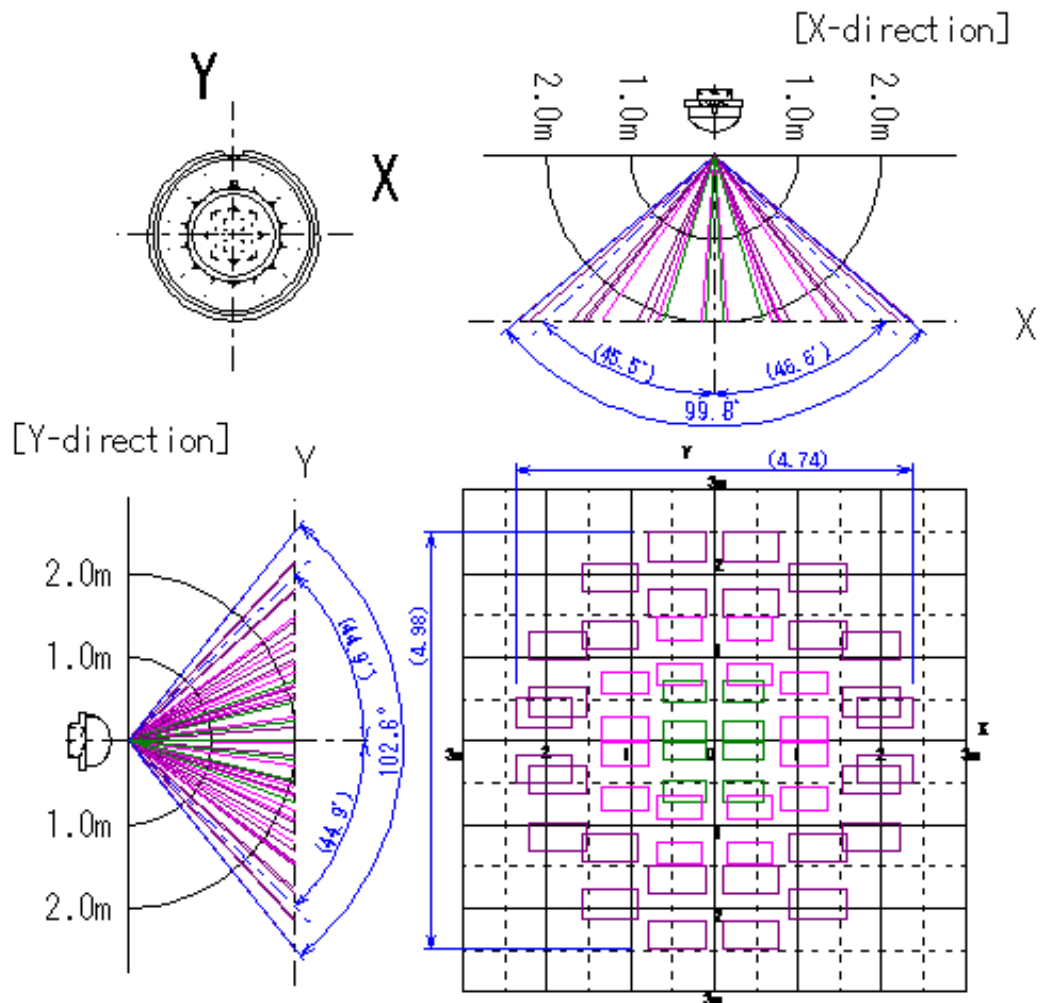


- Sensor: Pyro-electric Infrared Sensor, One output with Four Elements Type
- Element Size: 0.75mm (X) x 0.75mm (Y) x Gap0.7mm

Unit [m]

Figure 2-A: Detection Area (Four Elements)


MODEL NO. : NCL-9(26)	DRAWING NO. : 1504091B	REV : A	PAGE 4 / 4	April, 15, 2009
PART NO. :				 NIPPON CERAMIC CO., LTD.



- Sensor: Pyro-electric Infrared Sensor, Dual Element Type
- Element Size: 2.0mm (X) x 1.0mm (Y) x Gap1.0mm

Unit [m]

Figure 2-B: Detection Area (Dual Element)

MODEL NO. : NCL-9(26)	DRAWING NO. : 1504091B	REV : A	PAGE 5 / 4	April, 15, 2009
PART NO. :				 NIPPON CERAMIC CO., LTD.